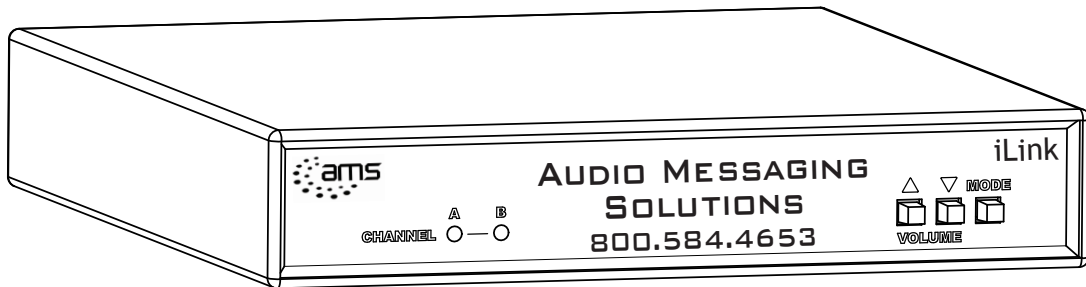


iLink



Installation & User Manual



AUDIO MESSAGING SOLUTIONS, LLC

720 BROOKER CREEK BLVD., STE. 215

OLDSMAR, FL 34677

800.584.HOLD (4653)

FAX: 727.785.7659

[HTTP://ONHOLDBUSINESS.COM](http://ONHOLDBUSINESS.COM)

INFO@ONHOLDBUSINESS.COM

Index:

Introduction	3
iLink Layout Summary.....	4
Installation	5
Connectivity Test/Volume Adjustments.....	6 - 7
Troubleshooting	8 - 9
Indicator & Button Function Charts	10
Warranty & FCC	11

Introduction:

The iLink is an Internet downloadable messaging system utilizing state-of-the-art MPEG compression to achieve truly stunning near-CD quality audio storage and playback. All unit management and audio downloads are accomplished by your dealer using a special controller software suite. When an update is needed your dealer connects to the iLink via your high-speed Internet connection and digitally transfers the MP3 audio files and configuration settings you need. Changes can be initiated on demand, scheduled from minutes to weeks, or the iLink can be instructed to connect automatically and load new audio.

Unpacking and Inspection:

Before you begin installation, unpack and verify you have all the correct parts.

- (1) iLink
- (1) 12VDC @ 500mA power supply
- (1) Ethernet cable
- (1) RCA to RCA cable
- (1) RCA to 3.5mm adapter
- (1) Wall mount bracket
- (2) Wall mount screws
- (1) Instruction manual and software utilities on CD

If you are missing any of these parts STOP and call your dealer.

iLink Layout Summary:

Front of Unit

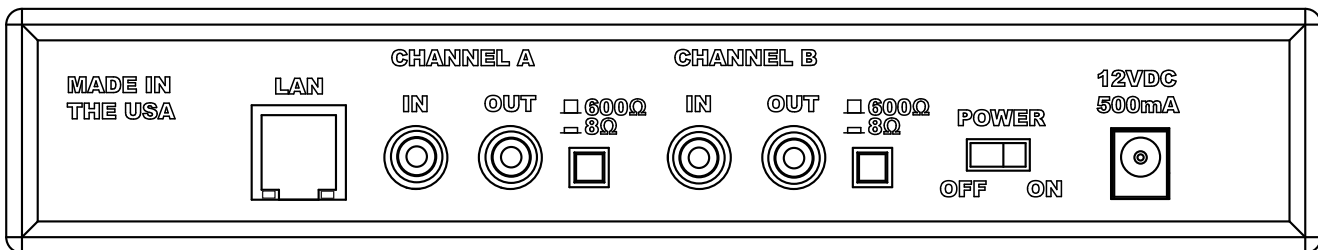


CHANNEL A & B - Depending upon the MODE these multi-color LED's will indicate unit status or volume control settings.

VOLUME - The primary function of these buttons is to control the output volume of the iLink as well as the BGM feedthrough level. The secondary function of these is to initiate a forced connection back to the dealers server as well as resetting the system.

MODE - This button places the iLink in different configuration modes that control server connection, unit reset, formatting and volume control functions.

Rear of Unit



LAN - This jack connects to the local Ethernet that allows the iLink connectivity to the Internet. The jack also has two built in LEDs that report back network activity and speed status.

CHANNEL A or B (IN) - This signal level jack allows an external BGM (Background Music) source to be fed through the iLink unit.

CHANNEL A or B (OUT) - This jack connects to a phone systems MOH input or a PA amplifier.

8Ω or 600Ω - This switch changes the output impedance of the CHANNEL A or B (OUT) jack.

POWER - Use this switch to turn the unit ON and OFF.

12VDC - This is where the supplied 12VDC @ 500mA power pack is connected.

Installation :

Step 1: Wall or shelf mount the unit. Rubber feet, a wall bracket and screws are supplied in the accessory kit.

Step 2: Verify the power switch on rear of unit is set to OFF. Attach the included power pack to a wall or power strip receptacle, then attach the other end to the jack on the rear of the unit labeled 12VDC.

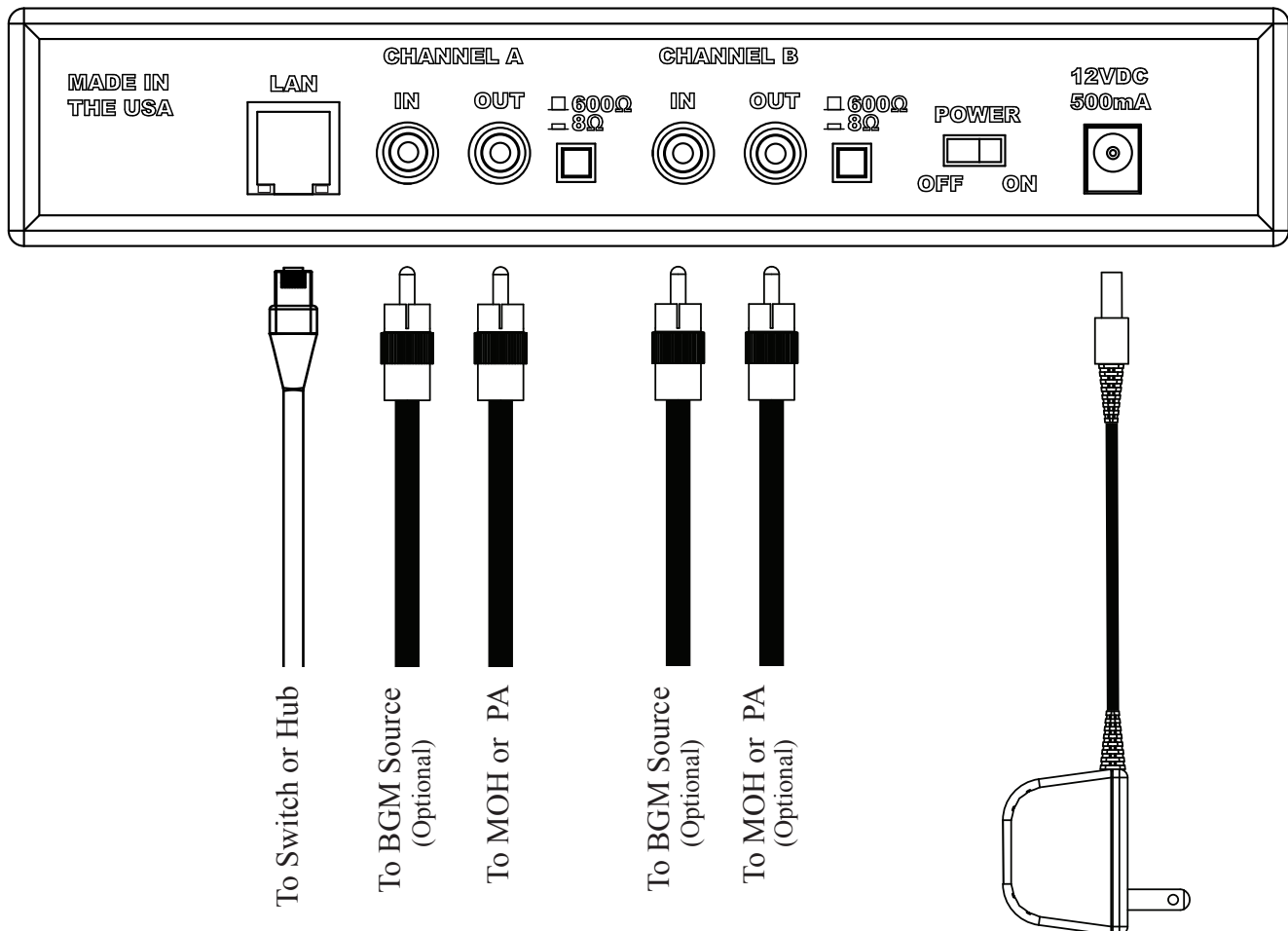
Step 3: If connecting unit to an amplifier make sure it is turned OFF for this part of the installation.

Step 4: Connect a RCA cable (supplied in the accessory kit) to the CHANNEL A (OUT) jack on the rear of the unit. Connect the other end of the RCA cable to a phones MOH port, PA amplifier or speaker. For dual output applications follow the same procedure for the CHANNEL B (OUT).

Step 5: (Optional) For messaging only applications the existing BGM (Background Music) can be fed through the iLink. Connect the audio source to the CHANNEL A or B (IN) jack(s) on the rear of the unit. This jack must only be fed signal level audio - ANY AMPLIFIED AUDIO WILL DAMAGE THE UNIT.

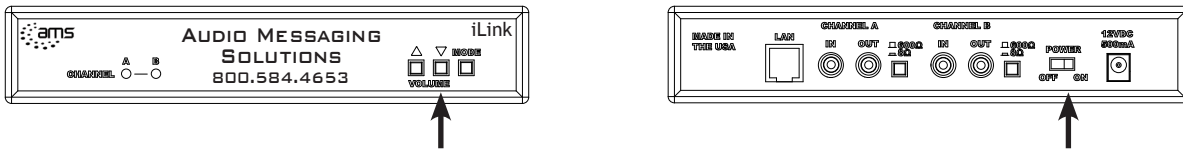
Step 6: Connect an Ethernet cable (supplied in the accessory kit) to the LAN jack on the rear of the unit. Connect the other end to a 10/100 speed switch or hub.

Wiring Diagram



Connectivity Test:

Step 1: Turn the power switch to ON while holding in the DOWN VOLUME button for 5 seconds.



Step 2: The CHANNEL A and CHANNEL B LEDs should both BLINK ORANGE while trying to connect to server, once connected both LED's should be SOLID ORANGE.

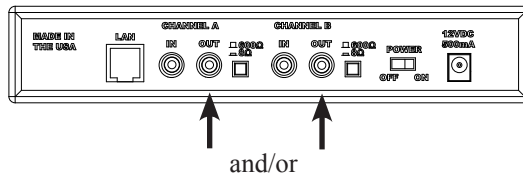


Step 3: After successful connection and download the LEDs (depending upon which CHANNELS are in use) will change to SOLID or FLASHING GREEN. This process can take anywhere from seconds to hours depending upon the size of download.

If this step fails try to power cycle the unit before using the troubleshooting guide or calling your dealer.

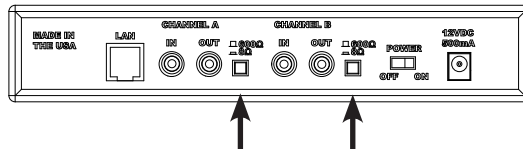
Stored Audio & BGM Feedthrough Level Adjustments:

Step 1: Verify CHANNEL A or B (OUT) is connected to either a phone's MOH port, PA amplifier or speaker.



Step 2: While the CHANNEL LED is SOLID GREEN check the audio level of the device connected to the corresponding OUT jack of the iLink.

Step 3: Depending upon the device the 600Ω/8Ω switch may need to be pushed to better match the impedance of the device the iLink is driving.

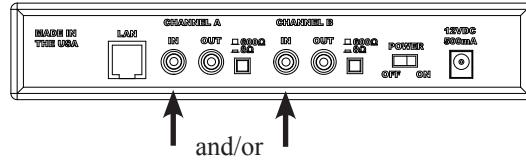


Step 4: To adjust the stored audio output level press the MODE switch until the LEDs match the chart below. Once they match the chart below then the VOLUME UP and DOWN buttons can be used to adjust the volume. If no activity is seen after 60 seconds the unit LEDs will return to normal operation.

	"A" LED	"B" LED
Adjust CHANNEL "A" volume	SOLID GREEN	OFF
Adjust CHANNEL "B" volume	OFF	SOLID GREEN

STOP! If this does not require a BGM feedthrough then installation is complete!

Step 5: Verify CHANNEL A or B (IN) is connected to the BGM source.



Step 6: To adjust the BGM feedthrough output level press the MODE switch until the LEDs match the chart below. Once they match the chart below then the VOLUME UP and DOWN buttons can be used to adjust the volume. If no activity is seen after 60 seconds the unit LEDs will return to normal operation.

	“A” LED	“B” LED
Adjust CHANNEL “A “ BGM volume	FLASHING GREEN	OFF
Adjust CHANNEL “B” BGM volume	OFF	FLASHING GREEN

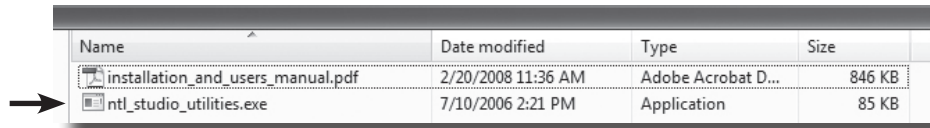
If this step fails see the troubleshooting guide or call your dealer before continuing.

INSTALLATION COMPLETE

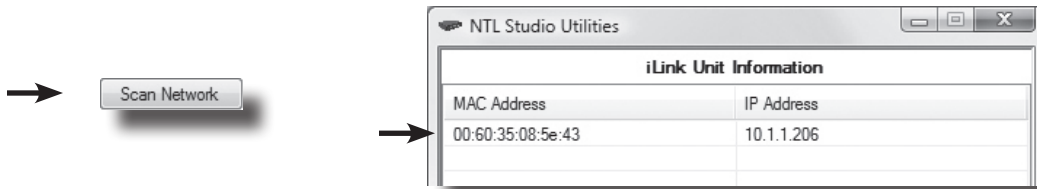
Connectivity Troubleshooting:

Step 1: Verify the iLink has been assigned an address by the network.

- Place the “Documentation and Utilities” CD on a computer on the local network.
- Browse the CD and run the NTL Studio Utilities program.



- Click on the “Scan Network” button. Any iLink units on the local network will be displayed.



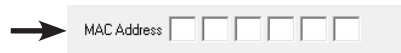
- If iLink units MAC and IP address are displayed the skip to *Step 3*, otherwise continue to *Step 2*.

Step 2: Manually assign a Static IP address to the iLink.

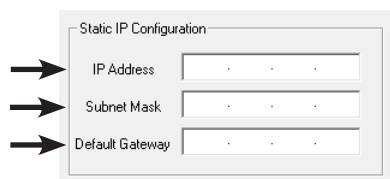
- Using the same application as the previous step, click on the “Assign IP” button.



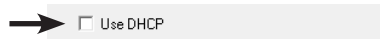
- In the pop-up screen enter the MAC found on the bottom label of the iLink.



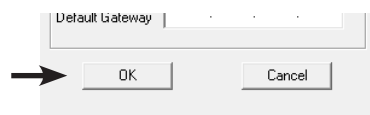
- Assign a Static IP address as well as the subnet mask and gateway of local network.



- Make sure DHCP is not checked.



- Click “OK”

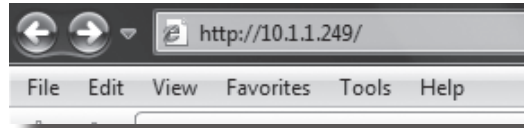


- Retry the “Connectivity Test” - If test fails continue to next troubleshooting step.

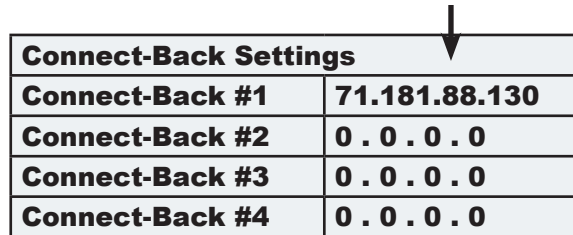
Step 3: Verify the iLink has been assigned at least one Connect-Back address.

- a. Open a web browser and type the DHCP assigned or manually assigned Static IP address. If the NTL Studio Utilities program is still open, then the “Configure IP” button can be clicked for the same result.

Example:



- b. The unit's built in web application will launch and display the current system settings.
- c. Inspect the “Connect-Back Settings” - there should be at least one IP address assigned.

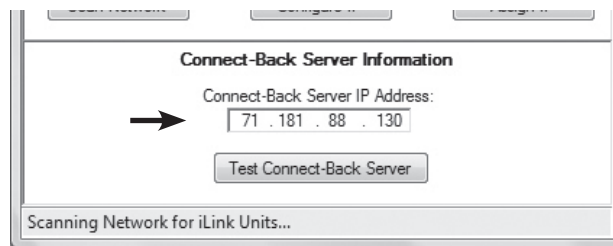


Connect-Back Settings	
Connect-Back #1	71.181.88.130
Connect-Back #2	0 . 0 . 0 . 0
Connect-Back #3	0 . 0 . 0 . 0
Connect-Back #4	0 . 0 . 0 . 0

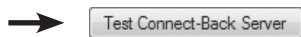
- d. If all of these fields are blank then contact your dealer for assistance in entering this information.
- e. If at least one field has an IP address then continue to next step.

Step 4: Verify iLink can communicate with your dealer's server.

- a. Run the NTL Studio Utilities program from the CD.
- b. Enter the Connect-Back Server IP Address (This is the address from the previous step).



- c. Click on the “Test Connect-Back Server” button.



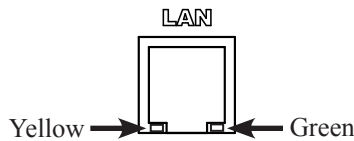
- d. The status bar on the bottom of program will display a PASS or FAIL.
- e. PASS will signify that the unit seems to be setup correctly on the network.
- f. FAIL will signify that a firewall or other security setting is blocking traffic to the unit and that the network administrator or dealer will need to get involved.

Front LED Indicators



Action	CHANNEL "A" LED	CHANNEL "B" LED
Nothing Playing/No Schedules	SOLID RED	SOLID RED
Playing Audio	SOLID GREEN	SOLID GREEN
Scheduled Mode	FLASHING GREEN	FLASHING GREEN
Attempting Server Connection	FLASHING ORANGE	FLASHING ORANGE
Connected to Server	SOLID ORANGE	SOLID ORANGE
Adjust CHANNEL "A" volume	SOLID GREEN	OFF
Adjust CHANNEL "B" volume	OFF	SOLID GREEN
Adjust CHANNEL "A" BGM volume	FLASHING GREEN	OFF
Adjust CHANNEL "B" BGM volume	OFF	FLASHING GREEN
Formatting	GREEN → ORANGE → RED	GREEN → ORANGE → RED

Rear LAN LED Indicators



Action	LED
No Link	OFF
10 Mbps	FLASHING
100 Mbps	SOLID

Action	LED
No Activity	OFF
Half-Duplex	FLASHING
Full-Duplex	SOLID

Front Buttons

Action	▲	▼	MODE
Volume Control Settings ¹	-	-	Push and Release
Forced Connect-Back to Server	-	Hold on Power Up	-
Reset Unit ²	Hold on Power Up	Hold on Power Up	-
Complete Reformat of Unit ³	Hold on Power Up	Hold on Power Up	Hold on Power Up

¹ Local volume control must be enabled by dealer for this function to work. ² All unit settings are lost EXCEPT IP settings. ³ All unit settings are lost and returns unit back to factory default settings.

Limited Warranty

TERMS: Audio Messaging Solutions (“AMS”) warrants to the original purchaser (“Buyer”) that the Product sold is free from defects in material and workmanship at the time of purchase. The warranty period begins at the time of Product’s original purchase by the first end-user. The warranty applies for five (5) years from the original date of purchase, or as long as the product is owned by the original purchaser, whichever comes first. Included in the warranty are parts and labor. Buyer must provide written notice to AMS of any defective part or conditions within the warranty period. If the defect is not the result of improper use, service, maintenance or installation, and if the equipment has not been otherwise damaged or modified after shipment, AMS or its authorized representative shall either replace or repair the defective Product at AMS’s option. No credit shall be allowed for work performed by Buyer or unauthorized parties. Out-of-warranty repairs are invoiced at the current hourly rate plus the cost of parts, shipping and handling. In the event that the product serial number is missing or has been tampered with in any way, the foregoing warranty is void and without effect and AMS shall have no liability whatsoever on account of defects to such product.

LIMITATIONS: Except as stated above, there are no warranties, expressed or implied, that extend beyond the specifications for the product. AMS expressly disclaims any warranty, expressed or implied, that equipment sold hereunder is of merchantable quality or that it can be used, or is fit for any particular purpose. Buyer purchases and accepts equipment solely on the basis of the warranty here in above expressed. Under no circumstances shall AMS be liable by virtue of this warranty or otherwise for any special indirect, secondary or consequential damages to any person or property arising out of the use or inability to use the product.

REPAIRING OR REPLACING PRODUCT: Buyer may obtain the repair or replacement of any eligible part or equipment covered under this warranty through AMS. Buyer is responsible for all shipping and handling charges in connection with the performance of this warranty. Products returned to AMS must be securely packaged to prevent damage in transit, freight prepaid, and insured for replacement value. A return authorization number assigned by AMS must be clearly marked on the outside of the shipping container. Proof of purchase must accompany shipment. Items delivered to AMS without a return authorization clearly marked on the outside of the shipping container, and/or without proof of purchase is refused.

CONTACT: Please contact AMS at the address and phone number below to receive a return authorization number and to arrange for the repair or replacement of a flawed part covered by this warranty. Please indicate the Product’s serial number in all correspondence or a RMA authorization number in the absence of a serial number. AMS, LLC, 720 Brooker Creek Blvd., Ste. 215, Oldsmar, FL 34677, Phone: 1.800.584.4653.

COPYRIGHT NOTICE: The AMS iLink is strictly used for licensed content only. Use of copyrighted content is illegal and AMS takes no responsibility for that action.

FCC Part 15 : This equipment has been tested and found to comply within the limits for a Class A digital device, pursuant to Part 15 of the FCC rules. These limits are designed to provide reasonable protection against harmful interference when the equipment is operated in a commercial environment. This equipment generates, uses and can radiate radio frequency energy and, if not installed and used in accordance with the instruction manual, may cause harmful interference to radio communications. Operation of the equipment in a residential area is likely to cause harmful interference in which case the user will be required to correct interference at his own expense. In order to maintain compliance with FCC regulations shielded cables must be used with this equipment. Operation with non-approved equipment or unshielded cables is likely to result in interference to radio & television reception.

Changes or modifications not expressly approved by AMS could void the users’ authority to operate the equipment.

IC ES 003 : This Class A digital apparatus complies with Canadian ICES-003 C et appareil numérique de la classe A est conforme à la norme NMB-003 du Canada.

CE CONFORMITY : The AMS iLink conforms with the following standards, in accordance with the EU Safety, EMC Emissions, & EMC Immunities : EN 60950-1:2001, EN 55022:1998 for Class A, EN 55024:1998 + A1:2001 + A2:2003, EN 61000-4-2:1995 + A1:1998, EN 61000-4-3:1995, EN 61000-4-4:1995, EN 61000-4-5:1995, EN 61000-4-6:1996, EN 61000-5-11:1994.

